

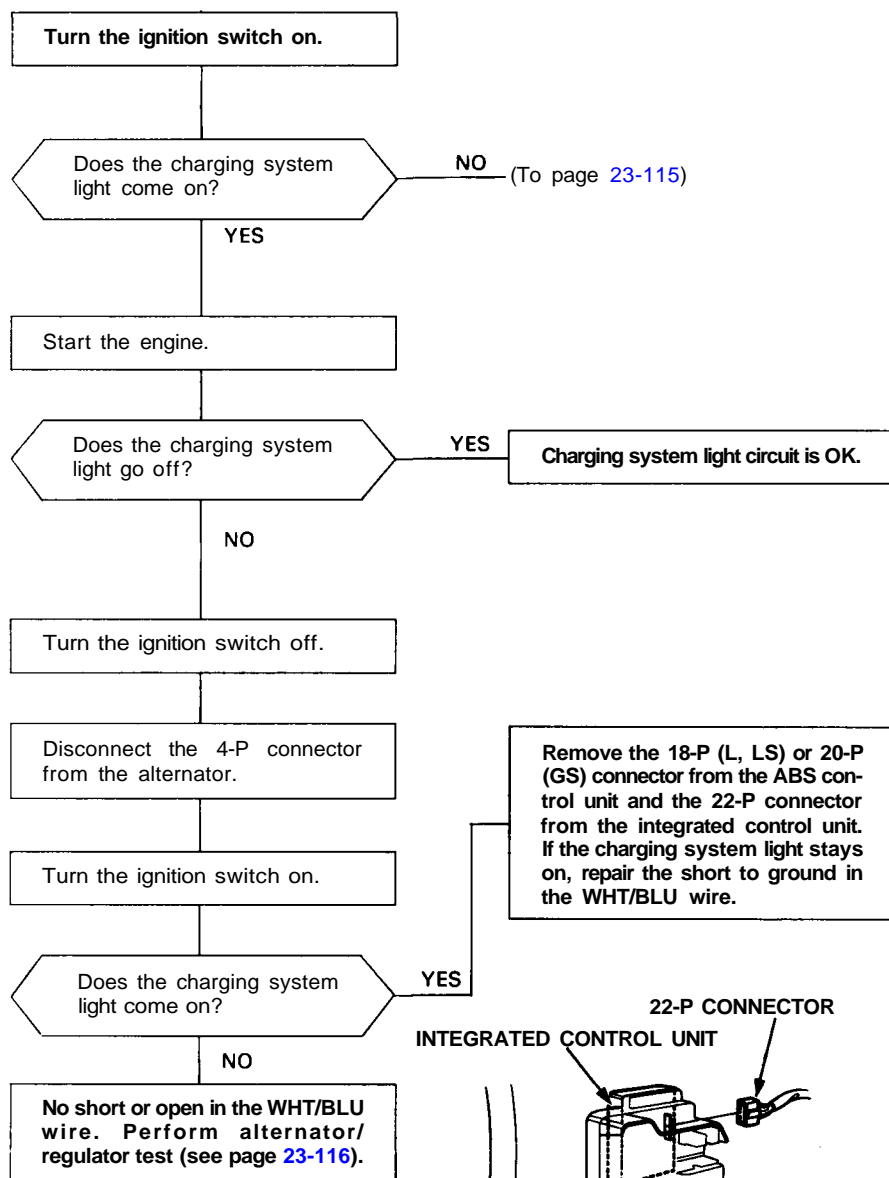
Charging System

Troubleshooting

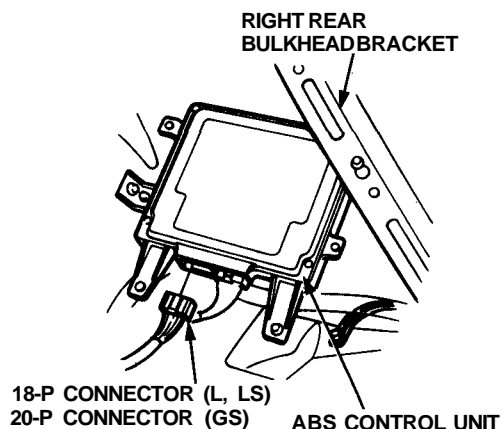
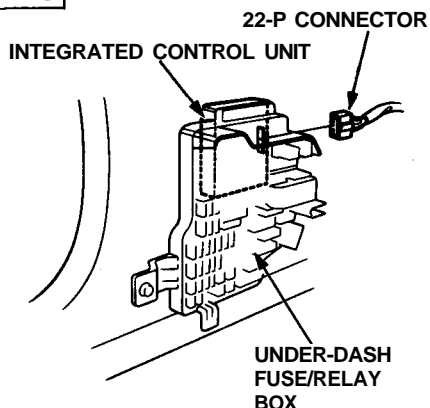
If the charging system light is on, or the battery is dead or low, perform the following tests in the order listed below:

1. Battery Test (see page 23-72)
2. Charging System Light Test
3. Alternator/Regulator Test

Charging System Light Test



NOTE: After this test or related repairs, reconnect the control unit connectors, then reset the ECM (M/T) or PCM (A/T) to clear any codes.





(From page 23-114)

Turn the ignition switch off.

Check fuse No. 22 (20 A) in the under-dash fuse/relay box.

Is the fuse OK?

NO

Replace the fuse.

YES

Disconnect the 4-P connector from the alternator.

Turn the ignition switch on.

Check for voltage at the IG terminal (BLK/YEL wire) of the 4-P connector.

Is there battery voltage?

NO

Repair open in the BLK/YEL wire.

YES

Ground the WHT/BLU wire at the L terminal of the 4-P connector.

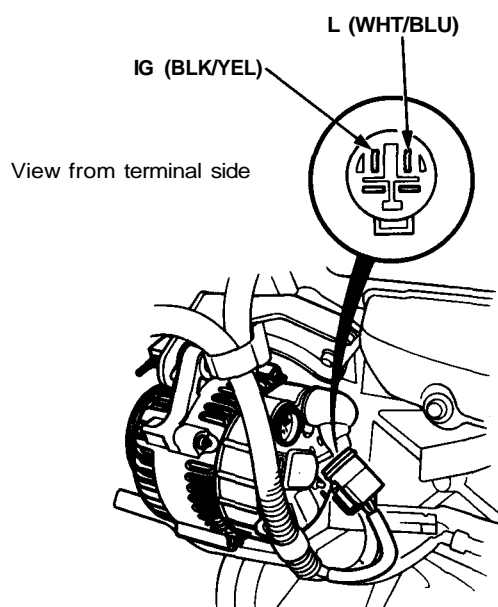
Does the charging system light come on?

NO

Check for a blown charging system light bulb. If the bulb is OK, repair open in the WHT/BLU wire.

YES

Replace the voltage regulator



(cont'd)